

OLD MILL PRIMARY SCHOOL



COMMUNICATION

Station Road
Broughton Astley
Leicestershire
LE9 6PT

admin@oldmill.leics.sch.uk

01455 284191

@OldMillPS

@old_mill_primary_school

www.facebook.com/OldMillPrimarySchool

Our school website hosts a wealth of information about our school, including our curriculum, policies and procedures:
<https://www.oldmillprimary.co.uk/our-school>



Our communication with parents continues to be via Ping - please ensure you have the app downloaded, notifications switched on and check messages regularly.



NEWSLETTER

October/November 2025

MESSAGE FROM MRS. SMITH-STEWART

Dear Parents and Carers,

We have blinked and we are nearly at Christmas - where has this half-term gone?

Life at Old Mill has been busy with learning, activities, trips and events - it's been lovely to witness the happiness in school.

We have lots to look forward to in the weeks running up until Christmas - performances, sharing assemblies, our annual in-house panto and Decorations morning. We hope to see lots of parents and carers in school in their christmas jumpers and glitter!

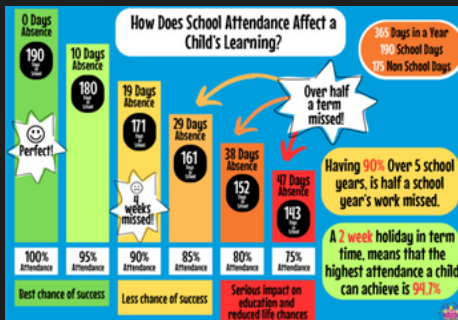
Our parent group OMSA have been working really hard in preparation for our annual Winter Fair this weekend - we hope to see lots of families here supporting the event!

I hope to see you on Saturday!

Alison Smith-Stewart,

ATTENDANCE

Regular school attendance is crucial for primary children, as research shows that missing just 10% of school can significantly hinder academic progress. Pupils with high attendance rates are more likely to achieve better outcomes, with 91% of students attending regularly attaining expected standards in key subjects. Please see below this month's top attendance figures:



WEEK COMMENCING 22.09.25

KS1 - 1HS/RB 99.9%

KS2 - 5EB 100%

WEEK COMMENCING 6.10.25

KS1 - 1HS/RB 100%

KS2 - 3KB 100%

WEEK COMMENCING 13.10.25

KS1 - FHB 96.9%

KS2 - 5EB 96.7%

WEEK COMMENCING 27.10.25

KS1 - 1CD & 1HS/RB 99.2%

KS2 - 3JL/KS 100%

WEEK COMMENCING 03.11.25

KS1 - FHB 98.1%

KS2 - 3JL/KS 100%

WEEK COMMENCING 10.11.25

KS1 - 2ED 99.1%

KS2 - 3JL/KS 100%



YEAR 5 AND 6 FOREST SCHOOL

Our new Forest School sessions have got off to a fabulous start this term, with Year 5 and 6 enjoying some wonderful activities in some very wet and chilly weather! It is so lovely to see such high levels of engagement and enjoyment and to hear children sharing such amazing stories about the activities they have taken part in. A big shout out to Mrs Smith and Mrs Hodder who have worked incredibly hard on planning and delivering the new Forest School sessions.



Year 5 enjoying the rope swing!

Some groups created shelters to protect them from the rain!



6



5



Year 5 created a mud slide which was enjoyed by everyone! Sorry about the dirty washing Year 5 parents...



Year 6 Sport Ambassadors



Our new Sports Ambassadors attended a conference to be trained in their role - to help promote sporting values in school and inspire their peers to get involved with sport and physical activity. The pupils took part in a range of workshops including communication, delivering playground games and marketing. The ambassadors are now a School Sports Organising Crew (helping our school achieve the School Games Mark). During the year, they might lead assemblies, run activities with their peers and create sporting displays around school. They have all received a T shirt which they can wear when they are fulfilling their duties around school!



Year 6 Well-being Ambassadors



Our Well-Being Ambassadors attended a conference which provided training to support them in their new role, helping them to promote mental health and inspire their peers to think about their own well-being. Sessions included mental health awareness and internet safety training.

The Ambassadors have now formed a Well-Being Committee. Together, they will create an action plan to implement within the school community. This may include delivering assemblies, running peer activities, or setting up displays and noticeboards to encourage well-being. They will wear their Well-Being Ambassador t-shirts when carrying out their duties on behalf of the school.

We look forward to seeing the impact that they have in our school community this academic year!



National Poetry Day



On October 2nd, we celebrated National Poetry Day, with this year's theme of Play. Every class enjoyed exploring different types of poetry and taking part in creative activities. Unsurprisingly, the nonsense poems were a favourite choice. Everyone enjoyed sharing their poems and celebrating the fun and creativity of poetry!



Friday 3rd October 2015

The haunted house of fun!
 In the haunted house of fun,
 I played Jenga with a zombie,
 In the haunted house of fun,
 I played tag with a mummy!

In the haunted house of fun,
 I won a game of Hide and seek with a moose
 In the haunted house of fun,
 I played duck, duck goose with a goose!

In the haunted house of fun,
 I played water polo with a platypus
 In the haunted house of fun,
 I played chaos tag with a walrus!

In the haunted house of fun,
 I played battle ships with a pirate,
 In the haunted house of fun,
 I played simon says with a parrot!

In the haunted house of fun,
 I played many, many games
 In the haunted house of fun,
 I won!

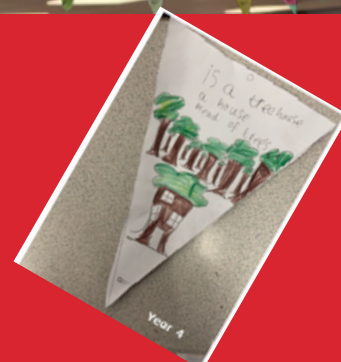
By Phoebe 6PB

Rules for a Good Walk

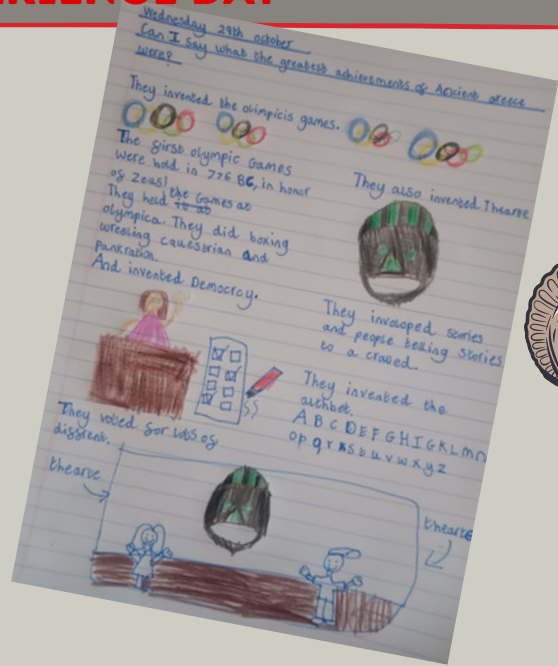
By 4RG

come out with me
 hide in the tall grass
 identify bugs with me
 let's climb the trees
 your phone is away
 roll down the hill
 make a mud pie
 swing across the river
 and birdwatch with me
 your phone is away

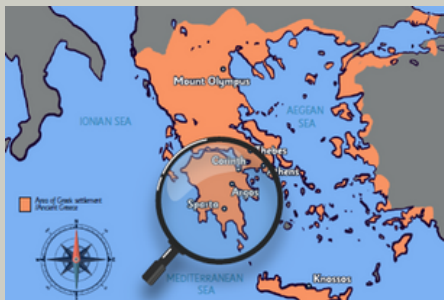
look at the daisies
 run along with the dog
 your phone is away
 make stick people
 find conkers and acorns
 stomp on crunchy leaves with me
 and pick (and eat) juicy berries
 your phone is away
 stargaze with me
 enjoy the company and
 cuddle together
 your phone is away
 your phone is away



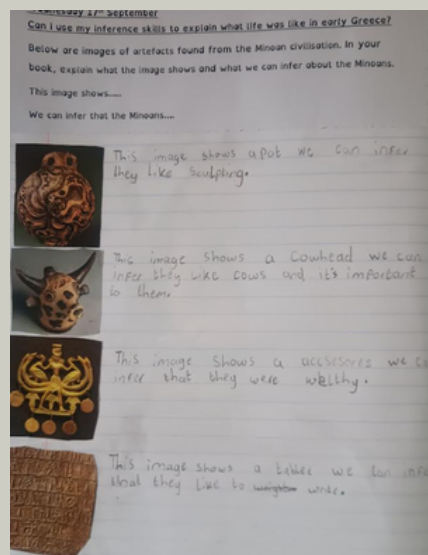
YEAR 4 GREEK EXPERIENCE DAY



Year 4 had a wonderful time on Friday 14th November, immersed in an experience day on the Greeks.



The children thought about life in Athens and life in Sparta. They made lots of comparisons with their life today.



Foodbank Collection



A huge thank you to everyone who contributed to our recent food bank collection. Thanks for your kindness and generosity, we donated an incredible 95.1kg of food! This amazing amount is enough to feed at least ten people three meals a day for three days. Our support makes a real difference - thank you so much!

Lutterworth & Villages
Foodbank
Together with Trussell



Thank you!

Old Mill Primary School

For your fantastic Harvest donations weighing 95.1 kg!

Your dedication and support have made a huge difference to the lives of people living in poverty.

Lucy Freeman
Foodbank Project Manager

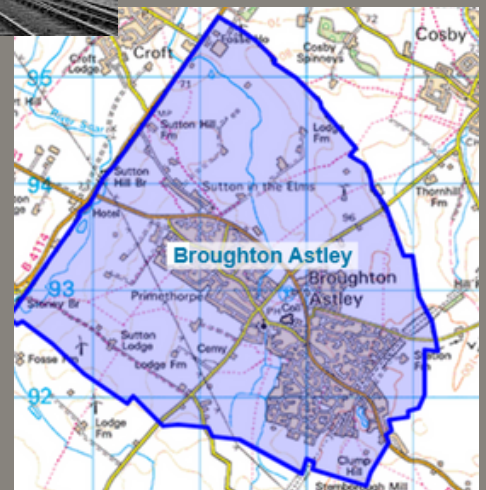
Registered charity number 1134507. Registered in England and Wales.



Year 1 Walk around Broughton Astley



Year 1 went on a History Walk around the village. We used old photographs, and found out about how things have changed over time. Did you know that Broughton Astley once had a mill with a water wheel, and it also had a train station up until 1962?



ROCK STAR DAY!



Staff Winner

Mrs. Hughes!

Mrs Hughes won the best dressed member of staff, we feel she should dress like this more often!

- KS1 Winners**
- Ivy
 - Haiden
 - Freddie
- KS2 Winners**
- Izzy
 - Kenan
 - Erin
 - Jan
 - Ellis
 - Frankie
 - Mia



We all had such a fantastic day for our Rock Star event. Thank you to parents for all the amazing costumes, hair styles and props that the children came into school with. Everybody looked amazing and we all enjoyed a rock style disco on the playground in the afternoon. A shout out to Miss Gillett for organising this succesful event and to Mr Butler for sorting the music!

Battle of the Bands Winners

1	5EB	179
2	4AH/RG	112
3	5EJ	72

The Children enjoyed battling against each other on TTRS and the overall winners were 5EB!



Local Support Services

Lutterworth

There is always a service out there for you no matter what the situation. Here are the details for some great support services available – Winter 2025.

Wellbeing Services

- NHS Urgent Mental Health Support: 111 option 2
- Samaritans: 116 123 – available 24hr/ 365 days a year
- Mind: 0300 123 3393
- Vita Minds: 0330 094 5595
- Freeva: 0808 802 0028 – Domestic violence and abuse support for Leicester, Leicestershire & Rutland

Utilities

National Grid: Power Cut emergency dial 105

In the event of a power cut, or any power related emergency, please give us a call. We are available 24 hours a day, 7 days a week. 0800 6783 105

Cadent Gas Network: If you can already smell gas and/or think there could be a leak, you should call us immediately on 0800 111 999* at any time of the day or night.

Water: Seven Trent: Emergencies (24hrs) 0800 783 4444 or Anglian Water: Report an issue 03457 145 145

Leicestershire and National Support Services

- Leicestershire County Council Adult Social Care- 0116 305 0004
- Leicestershire County Council Childrens Social Care – 0116 305 0005
- Citizens Advice – 0300 330 2111 General Advice / 0116 464 7239 Debt Advice
- Age UK General Contact – 0116 299 2233
- Silverline - 24hr confidential line for advice, information and friendship for older people - 0800 470 8090

Support Hubs and Transport

Lutterworth Help Hub 2nd Thursday of every month
At the Churchgate Centre, St Marys Church, Lutterworth. LE17 4AN
Here to Help - in a friendly space, for information, advice and guidance

Tor 07949 318 629 office@wycliffefellowship.org

Lutterworth Community Transport – Social Care scheme and Community Bus services available

01455 555571 admin@luttct.com

GP Surgeries & Social Prescribers

01455 552346 – Masharani Practice Lutterworth
01455 553531 – Wycliffe Practice Lutterworth

Referrals can be made through GP / reception or Health Care Professional - Lucy Croucher



Pharmacy First – Your local pharmacist can offer advice on a range of illnesses, such as coughs, colds, sore throats, aches and pains and can give advice on medication. They can also suggest treatments that do not need a prescription for a range of conditions such as impetigo, earache, sinusitis, urinary tract infections. They will also update your health record

Warm Homes

The Warm Homes Service provides energy advice and support to resident of Leicestershire to help reduce energy bills and keep them warm and healthy in their homes. The Service can signpost to any grants available to increase the energy efficiency of domestic properties.

General enquiries - warmhomesinfo@leics.gov.uk

www.leicestershire.gov.uk/home-energy-grants

0116 305 2524



Neighbourhood Cafes

The Lutterworth Wellbeing Café is open to anyone, over the age of 18 years old, who feels they would benefit from some mental health support, whether they are feeling lonely, anxious, or are finding it hard to manage difficult feelings.

Lutterworth Family Hub Coventry Road, Lutterworth, LE17 4RB
Monday – 1.00pm – 4.00pm and Wednesday – 4.30pm – 7.30pm

Local Area Coordinator

Local Area Coordination uses a person centred approach to help connect people together to be part of their community, as well as finding out what support and services are available locally.

Lynne McConnachie – Local Area Coordinator Lutterworth

Lynne.McConnachie@leics.gov.uk

07889806061



Harborough District Council

Contact details and general information can be accessed at

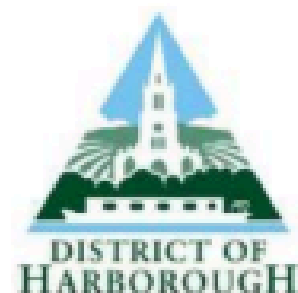
01858 828 282 www.harborough.gov.uk/contact

Cost of living information can be accessed at

www.harborough.gov.uk/cost-of-living

Veterans Gateway – Armed Forces officer Ian Reynolds

ian.reynolds@harborough.gov.uk 07722894568



Family Hubs Leicestershire - Leicestershire County Council

Families and young people across Leicestershire can now access a range of services and advice in the Family Hubs. Working with partner organisations, the staff and volunteers are there to support you ensuring you have access to the right help and guidance.

Lutterworth Family Hub – 0116 305 5011

www.familyhubsleicestershire.org.uk

Food & Hygiene banks



Food Bank (Trussell Trust) for Lutterworth & Surrounding Villages and The hygiene bank run on Tuesdays and Fridays.

Referrals for this can be made via registered professional services such as: Citizens Advice, GP Surgery or Local Area Coordinator

The Lutterworth Community Fridge aims to help people in the Lutterworth and surrounding area to decrease food waste and share surplus food for anyone to help themselves to quality food that would otherwise be wasted.

The Fridge will be open Mondays and Wednesdays 10.30am -11.30am and Thursdays 1.00 -2.00pm

First Contact Plus

First Contact Plus is delivered by Leicestershire County Council in partnership with GPs, the police, health organisations, voluntary groups and social care departments, district & borough councils who are helping adults across the county by working together to make access to services much easier

firstcontactplus.org.uk/



Voluntary Action South Leicestershire

VASL is a local, volunteer-involving charity providing services to improve the lives of people in our community. These include advice and support for unpaid carers, befriending, events and digital support for older people who are lonely and isolated.

Voluntary Action South Leicestershire (VASL)

01858 433232 admin@vasl.org.uk



Local support information has been created by the Local Area Coordination team in partnership with all listed services to help raise awareness of support and information that is available to you locally and within your district.